

Dry bainmarie

The Electrolux Drop in range is the optimal answer to the needs of the modern distribution. The complete integration with the surrounding ergonomic environment makes this range extremely versatile, be it for traditional (in-line), but above all free flow and free service distribution systems. The variety of functions available - from warm to dry, humid to refrigerated, remote or not, as well as dish lowerators-enables a customized answer to the most specific requirements. Both the product development and the industrial design of these products allow the optimization of the aesthetics of the products exposed. The models detailed on this sheet are 2,3,4 GN 1/1 dry bainmaries.



340304

EASY TO INSTALL

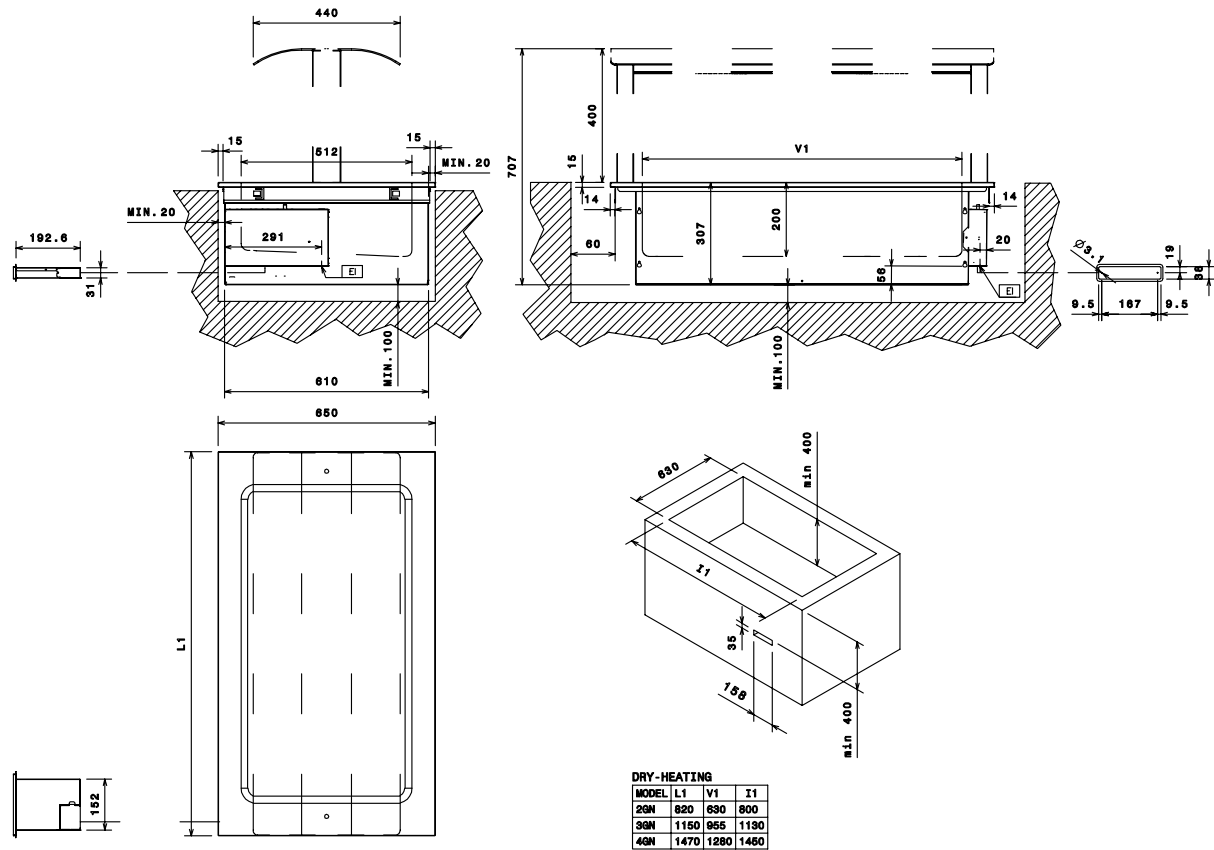
- Easy to install thanks to the fastom connection between the cable and the digital thermostat.
- The cut-out dimensions for the installation of the unit are: 800/1130/1450 x 630 x minimum 400 H mm.

EASY TO USE

- The digital control panel includes:
 - On-Off switch.
 - Digital thermostat.
 - Temperature display.
 - Adjustable temperature settings.

- The cable between the unit and the control panel is about 1.5 m long.
- The pressed bain-marie well is constructed in AISI 304 for 2, 3 and 4 GN 1/1, with rounded edges for easy cleaning.
- The continuous welding between well and worktop provides better resistance and strength.
- The heating element is composed of etched foils glued to the well bottom.

- All models comply with the standards required by the main international approval bodies and are CE marked.
- Developed and produced in ISO 9001 and ISO 14001 certified factory.



Electrolux Drop-in

Dry bainmarie

FDA030

2009-10-28

Subject to change without notice

	DI2DBM 340303	DI3DBM 340304	DI4DBM 340305
LEGEND			
EI - Electrical connection	230 V, 1N, 50	230 V, 1N, 50	230 V, 1N, 50
TECHNICAL DATA			
External dimensions - mm			
width	820	1150	1470
depth	650	650	650
height	307	307	307
Well			
width - mm	630	955	1280
depth - mm	512	512	512
height - mm	200	200	200
Top temperature - °C	140/185°C	140/185°C	140/185°C
Power - kW			
installed-electric	0.825	1.236	1.648
Net weight - kg.	20	27	35
ACCESSORIES			
3 SUPPORTS FOR GN1/2-1/3 CONT-BAIN MARIE	856493	856493	856493